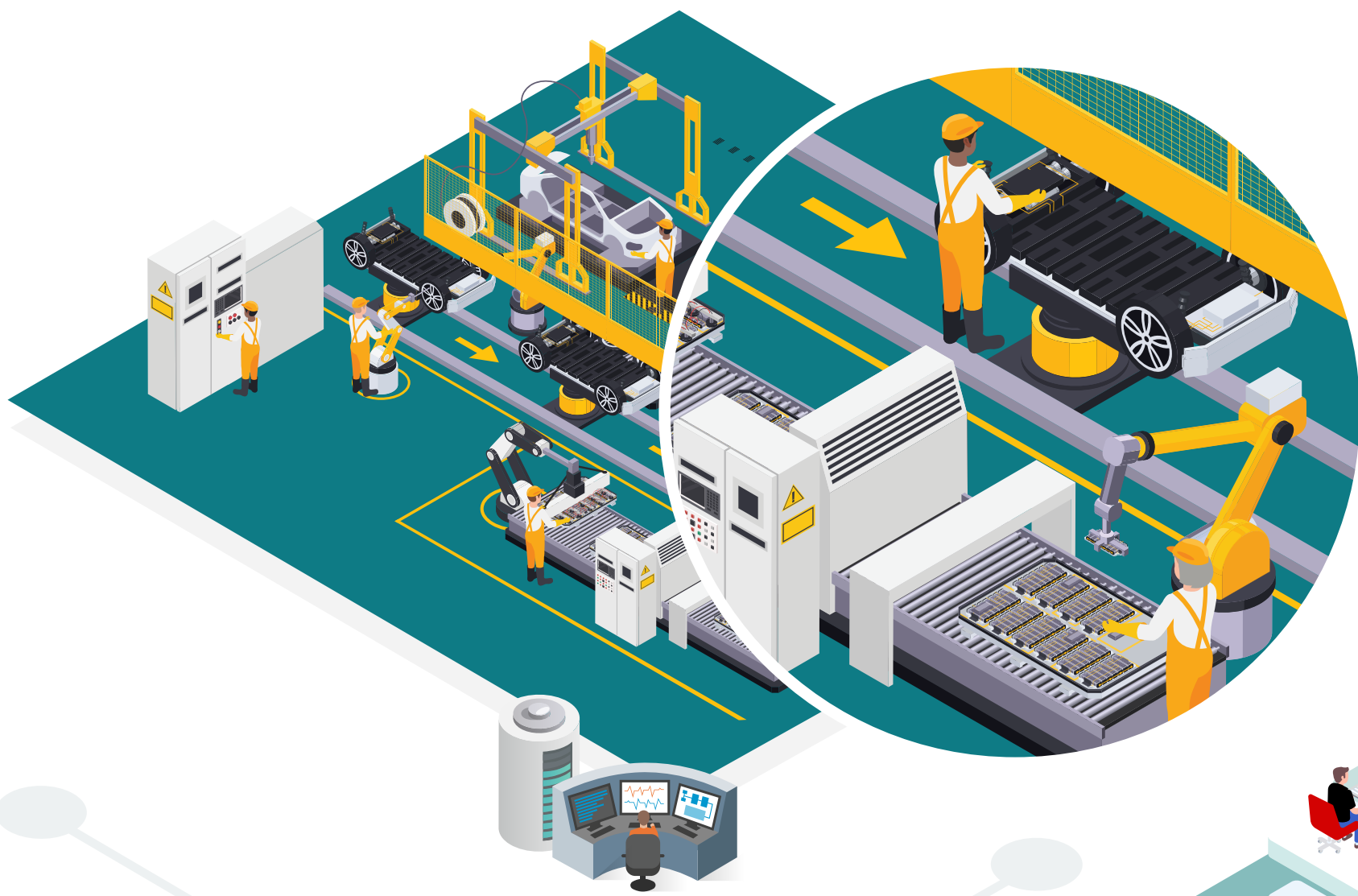
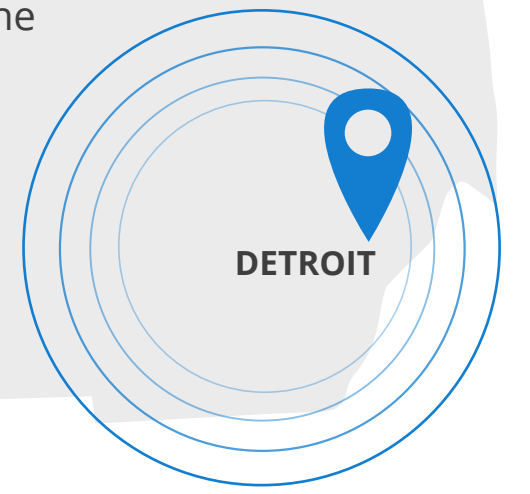


# A New Global Epicenter of Mobility

The Global Epicenter of Mobility (GEM) coalition, a signature program of the Detroit Regional Partnership, is investing \$52M in the Detroit Region to build on the region's automotive, engineering, design, innovation, and manufacturing expertise. The industry-wide transition from fossil fuels to electrification and other forms of future mobility changes more than technology and manufacturing processes—it also affects the livelihoods of hundreds of thousands of workers in the region. Navigating this shift with quality, equity, and innovation requires collaboration at every level.

This second century of advanced mobility will bring transformational economic growth, regional competitiveness, job creation, talent development, and new public and private investment to the Detroit Region, generating an inclusive and sustainable future for the region.



## Talent Transformation

**SEMCA MICHIGAN WORKS!**

Enabling retention and growth of an upskilled and diverse talent workforce and equipping the community with marketable skills for in-demand jobs.

## Mobility Innovation and Acceleration

**TECHTOWN DETROIT**

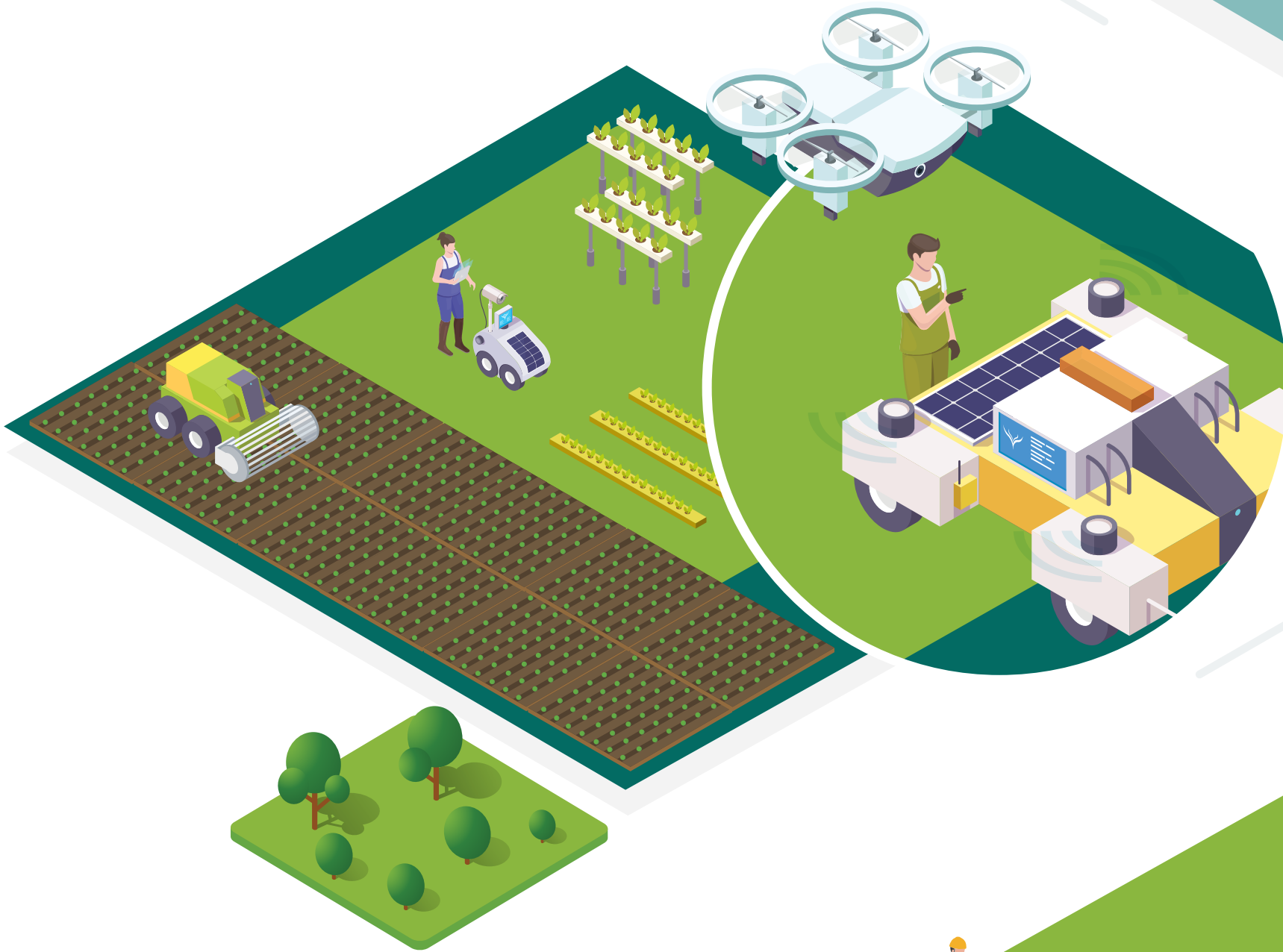
Accelerating the growth of mobility startups that drive innovation and fill gaps in the mobility value chain.



## Testing and Proving

**MICHIGAN OFFICE OF FUTURE MOBILITY AND ELECTRIFICATION**

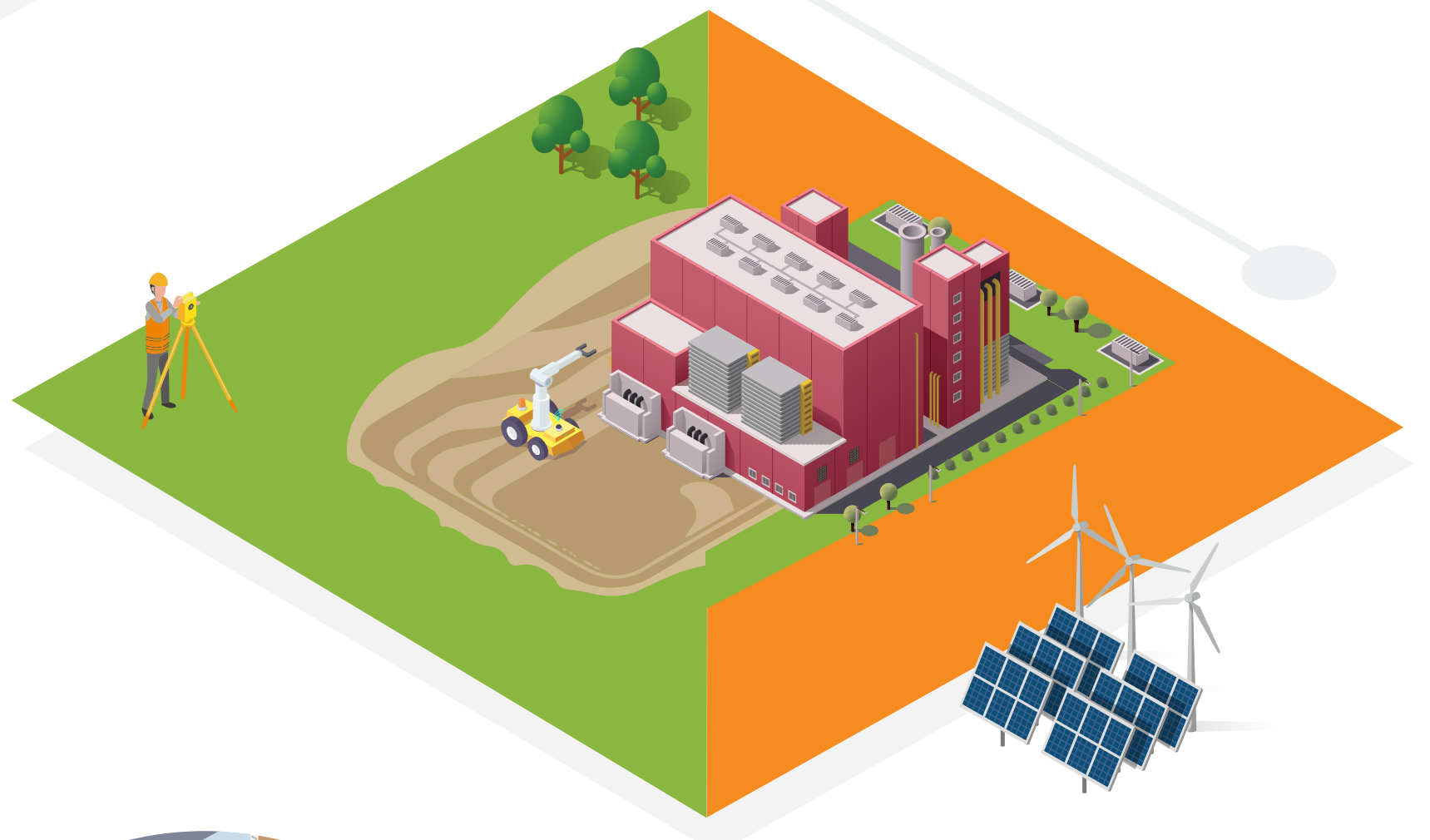
Helping small companies and entrepreneurs access the state's world-class testing and proving assets.



## Site Readiness

**VIP BY DRP**

Verifying and cataloging development-ready sites to attract major mobility investment across the region.



## Legacy and Transition

**UNIVERSITY OF MICHIGAN ECONOMIC GROWTH INSTITUTE**

Supporting medium-sized manufacturers and suppliers to transition to the future of mobility.



## Impacts



### QUALITY JOBS & WAGES

Training and employment services, needs assessments, employee matching, and apprenticeship opportunities will facilitate regional job seekers' access to marketable skills and in-demand jobs; this will bolster GDP growth.



### ADVANCED MOBILITY COMPANY SUCCESS

Advanced mobility companies of every size will have access to employee pipelines, world class testing sites, turn-key industrial properties ready for development, business coaching, and funder connections to take ambitious ideas to implementation.



## GEM Diversity, Equity and Inclusion

### A RADICAL LENS OF INCLUSION

Central to the mission of the GEM coalition is a radical lens of inclusion. We will engage historically excluded communities and embed equitable wealth creation into every aspect of cluster growth to balance emphasis on the region's diverse heritage with a transformative vision for its future.

Learn more about the coalition's plans to revolutionize the Detroit Region as a Global Epicenter of Mobility and build the region's reputation as the go-to place for advanced mobility workers, companies, and industries at

[www.gemdetroitregion.com](http://www.gemdetroitregion.com)

